

ENGINE	SX / VX		SXE
Make	Mahindra		
Engine Model	NEF350B		
Emission compliant	CEV V		
Engine Displacement (L)	3.5		
Engine Air Intake Type	Turbo charged Intercooled	Naturally Aspirated	
Engine Gross power @ 1950 rpm	55 kW (74 hp)	41 kW (55 hp)	
Engine Maximum Torque (Nm)	400 Nm@ 1100-1200 rpm	217 Nm @ 1400 - 1500 rpm	
LOADER GENERAL DIMENSIONS (WITH STD, IT TYRES)			
M - Dump height (m)	2.712		
N - Load over height (m)	3.267		
O - Pin height (m)	3.47		
P - Pin forward reach (m)	0.236		
Q - Reach at ground (m)	1.368		
R - Max. reach at full height (m)	1.117		
S - Reach at full height - Bucket dump (m)	0.728		
T - Below ground level-dig depth (m)	0.11		
U - Rollback angle at ground (deg.)	43		
V - Dump angle (deg.)	44		
Bucket capacity std. (m3)	1.1		
Bucket breakout force (kgf)	6243		
Loader arm breakout force (kgf)	5594		
Max. Pay load (kg)	1800		
Lift capacity (kg) @ max height	3428		
BACKHOE GENERAL DIMENSIONS			
A Max. dig depth (m)	4.355	4.213	
C - Reach at ground level to slew center (m)	5.700	5.513	
B Reach at ground level to rear wheel center (m)	7.038	6.850	
D - Reach at full height to slew center (m)	2.980	2.863	
F - Max. working height (m)	5.241	5.025	
G - Max. load over height (m)	3.599	3.256	
Bucket capacity (m3)	0.27	0.27	
Bucket tearout force (kgf)	5592	5672	
Dipper tear out force (kgf)	3182	2997	
Lift capacity to bucket pivot at full reach w/o bucket (kg)	1449	1403	
Lift capacity to bucket pivot at full reach with bucket (kg)	1180	1134	
OVERALL DIMENSIONS AND WEIGHTS			
Max Operating Weight (Kg)	7517	7509	
AM - Overall width (m)	2.50	2.470	
AJ - Width over bucket (m)	2.404		
Track width- Rear (m)	1.722		
Track width- Front (m)	2WD - 1.914 4WD - 1.920	1.914	
AB- Wheelbase (m)	2.176	2.200	
AC - Minimum Ground clearance (m)	0.326	0.29	
AE -Height to top of cabin	2.95		
AF- Overall height (m)	3.620	3.590	
HYDRAULIC SYSTEM			
System type	Open system		
Pump type	Fixed displacement - Gear Pump		
Pump Flow at Maximum RPM (lpm)	112 lpm @ 2150 rpm	105 lpm @ 2150 rpm	
Maximum working pressure (bar)	250	210	

SERVICE CAPACITIES		
Engine oil (L) - System	13.7	
Rear Axle (L)	17.1	
Hydraulic oil (L) - System	102	
Hydraulic oil (L) - Replacement/Interval*	50/3000 hr.	
Transmission Oil Capacity (L) - System	2WD - 19.2 4WD - 22	19.2
Fuel tank (L)	140	
Coolant (L)	17	
POWER TRAIN		
Transmission type	4F-4R Synchro Shuttle Transmission	4F-4R Synchro Shuttle Transmission
Transmission Make and Model	CARRARO TLB1 2WD/4WD	CARRARO TLB1 2WD
AXLE		
Rear	CARRARO	
Front	Mahindra - 2WD CARRARO - 4WD	Mahindra - 2WD
Front Axle Oscillation	±16 degree (2WD/4WD)	±16 degree
STEERING		
Type	Hydraulic Power Steering with dedicated pump	
Steering max working pressure specification (measurement on pump) Bar @ rpm	150 ± 10 bar @ 1950 rpm	
Steering Unit Displacement (cc/rev)	160	
Turning diameter outside bucket (Max. clearance circle diameter) (m)	10.66	11
Turning diameter outside wheels (Min. turning circle diameter) (m)	7.58	8.60
BRAKES		
Service	Foot operated hydraulically actuated oil immersed, 3 disc wet brakes on rear axle	
Parking	Hand operated,mechanically actuated caliper type brake system integral with axle	
TYRE		
Rear - (Optional) Heavy Duty	14 x 25 - 12 PR	
Rear - (Standard) Industrial	16.9 X 28, 12 PR	
Tyre Front	2WD - 9 X 16 - 16 PR 4WD - 12.5 X 18, 12 PR	9 X 16 , 16PR
ELECTRICAL SYSTEM		
Battery	12 volts, 110 Ah	12 volts, 100 Ah
TRAVEL SPEED		
Forward (1st/2nd/3rd/4th) (km/hr)	5.5 / 8.5 / 18.5 /33	5 / 7.5 / 16 / 30.5
Reverse (1st/2nd/3rd/4th) (km/hr)	5.5 / 8.5 / NR	5 / 7.5 / NR
OPTIONAL EQUIPMENT		
Backhoe Bucket (m3)	0.18, 0.30	
Tyre	Heavy Duty 14 X 25 - 12 PR / 20 PR	
Rock Breaker Kit	Yes	
High Dump Bucket	Yes	NA
Joystick Lever	Yes (VX model only)	NA
6 in 1 Bucket available (BDB)	Yes	
Extra Backhoe auxiliary valve	Yes	

Technical specifications, features are subject to change without prior notice. Images used are for representative purpose only. Accessories shown may not be a part of the standard product. Actual colors may vary. E&O.E. All dimensions are variable within +/-5%. For further details on warranty, please visit your nearest dealer.

DEALER NAME

Mahindra Construction Equipment,
Mahindra & Mahindra Ltd. | MCE Division |
Plot No #A-1/1 , Chakan Industrial Area, Phase-IV, Village Nigoje Chakan, Taluka-Khed,
Dist: Pune - 410501, Maharashtra, India.
Toll Free Helpline: 1800 547 0086, **Website:** www.MahindraConstructionEquipment.com,
Email: mce.marketing@mahindra.com

SX FEB 25

mahindra
CONSTRUCTION
EQUIPMENT

**POWERFUL
PERFORMANCE,
UNMATCHED
FUEL EFFICIENCY.**

PRESENTING mahindra **EARTHMASTER SX**



With
IMAXX
Telematic Remote Care

MAIN REASONS TO CHOOSE



RELIABLE MAHINDRA ENGINE

- CEV V Compliant reliable Mahindra NEF engine
- High torque engine for more tractive power - 16% higher than the previous model
- Best-in-class fuel consumption - higher productivity/liter

World-class Spacious Cabin

- Buddy seats for - 3 persons
- Toolbox below passenger seat - 2 No's
- Glovebox below passenger seat - 1 No's
- Side Digital Instrument cluster
- New Gen. music system



Loader Performance

- Higher fill factor with spill proof bucket
- Due to better tractive effort offers higher productivity on loader side
- Various loader attachments to increase the versatility of the machine



Reliable Powertrain

- World-class CARRARO axle and transmission - Reliable
- Balanced front axle (equal rotation of both wheels) - Easy safe operation

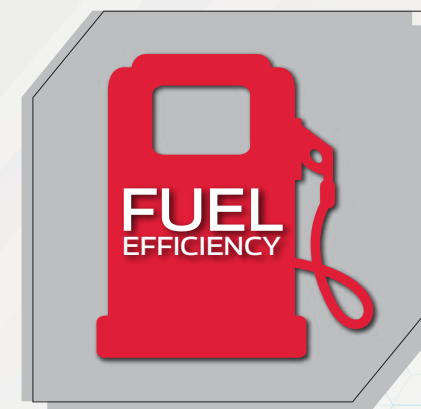
All-round visibility

- 2 ORVM & 1 IRVM provides better rear visibility
- LED Work lamps - more work visibility
- Rear Quarter windows on the cabin - better work visibility during loading from the backhoe side



Better Hydraulics System

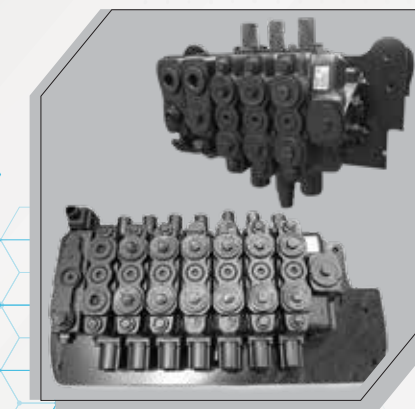
- One extra auxiliary valve for different type of attachment - Improved versatility
- Sandwich valve bank - Reliable and less maintenance cost (no need to replace complete valve bank)



Advanced Telematics

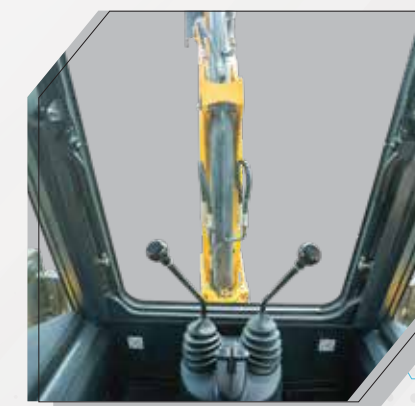
mahindra
IMAXX

- Mahindra "IMAXX" Telematics as standard offering
- Remote control and self-diagnostics
- Real-Time Alerts and Notifications
- Fuel Consumption Tracking
- Geofencing - Asset tracking and recovery



Best in class Fuel Efficiency

- Mode selection switch - Diesel saver, Normal & power mode provides better optimization of fuel
- Auto-Idle and Auto-shutdown - less idle time provides 5% of fuel saving



World-class Safety

- ROPS/FOPS enabled world class cabin
- Improved rear view mirror for better visibility
- Lockable battery cut off switch



Heavy Duty Structure

- Heavy casting on boom ends. Failure-free operation on tough application
- Metallic front fascia - more reliable during loading application

Less Maintenance cost

- Best-in-class maintenance cost - lowest operating cost
- Tandem gear pump offers less maintenance and replacement cost



11 New Features

